

A ROYALÉ TOUCHÉ PRODUCT
MADE IN GERMANY



ROYALÉ TOUCHÉ
LUXURY LAMINATES
PLYWOOD
WOODEN FLOORS

CRAFTED BY NATURE
PERFECTED FOR YOU

EDITION 7008



LLT - Liquid Layer Technology

Patented technology used for energy saving production of highly stable & balanced planks for a lifetime floor solution.



MADE IN GERMANY Designed for India



SYNCHRONISED TEXTURES

The most advanced synchronized textures bringing to life natural wood finishes.



ISOWAXX

Patented wax protection process across all joints to prevent swelling of the flooring due to moisture.



VARIABLE PLANK

Different plank sizes to create a majestic yet homely effect in every room type.



MEGALOC

Adhesive free laying & dismantling system for easy installation & moving whenever required.



V GROOVE

V Groove effect is specially colored to give the entire floor the same feel & look.



PRODUCTION

One of the largest manufacturing lines in the world for laminate flooring under one roof.



24HR WATERLOCK TECHNOLOGY



ABRASION-RESISTANT

The highest abrasion class available worldwide of AC4 and AC5 for all the floors.



Maid - Free

Enjoy our beautiful low maintenance floors.



NON-FADING

Pigments with UV resistance of 6+ on the blue wool scale, assuring colour fastness for years.

WHEN TITANS COME TOGETHER

History is created when two titans of industry cross each other's paths, and decide to walk the glory road, together.

A collaborative and creative force of such epic proportions changes the face of the industry, Beckoning a new era. Today we are at the cusp of such a phenomenon..

Royale Touche, a pioneer of luxury laminates in India, an icon with over four decades of prolific experience and expertise, joins hands with Classen, Germany one of the world's leading manufacturers of laminate flooring, to create Royale Touche Floors, the most exclusive range of wooden laminate floorings.

Why Royale Touche Floors?

- Synchronised Textures: Gives an excellent aesthetic and natural look to the floors, making it impossible to differentiate between laminate & natural wooden floors.
- Water Lock Technology: Prevents seepage of water from joints into the HDF substrate for 24 hours thus preventing any damage and swelling of the product.
- AC5 Abrasion Rating: Provides the floor with the highest in its class abrasion protection against all normal wear & tear and keeps your floors looking new for years to come.
- Liquid Layer Technology: Provides excellent balance and protection to the underside of the product to prevent warpage and allow for even expansion and contraction of the floors.

Newly Arrived

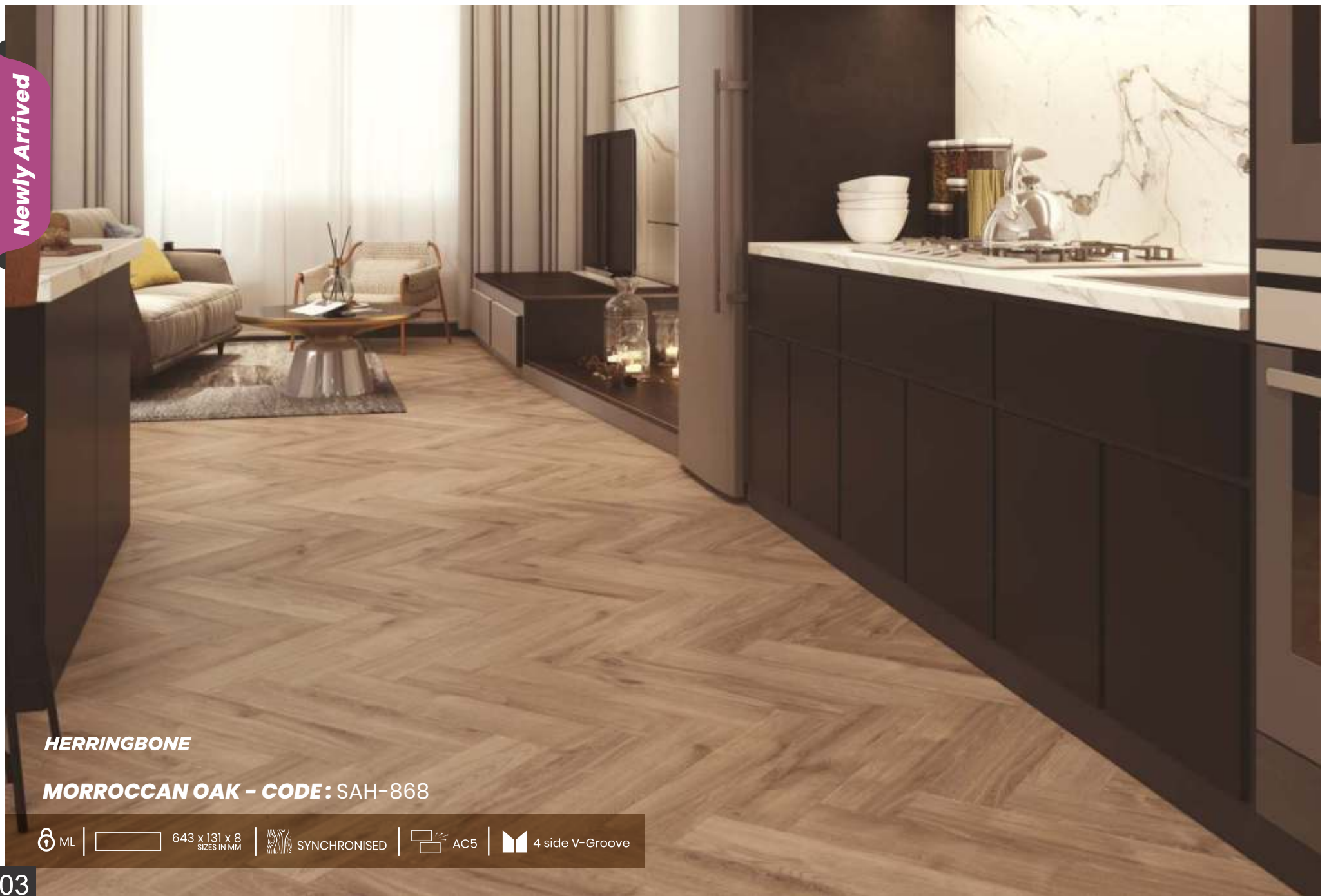


HERRINGBONE

NATURAL COUNTRY OAK - CODE: SAH-867

ML | 643 x 131 x 8 SIZES IN MM | SYNCHRONISED | AC5 | 4 side V-Groove

Newly Arrived

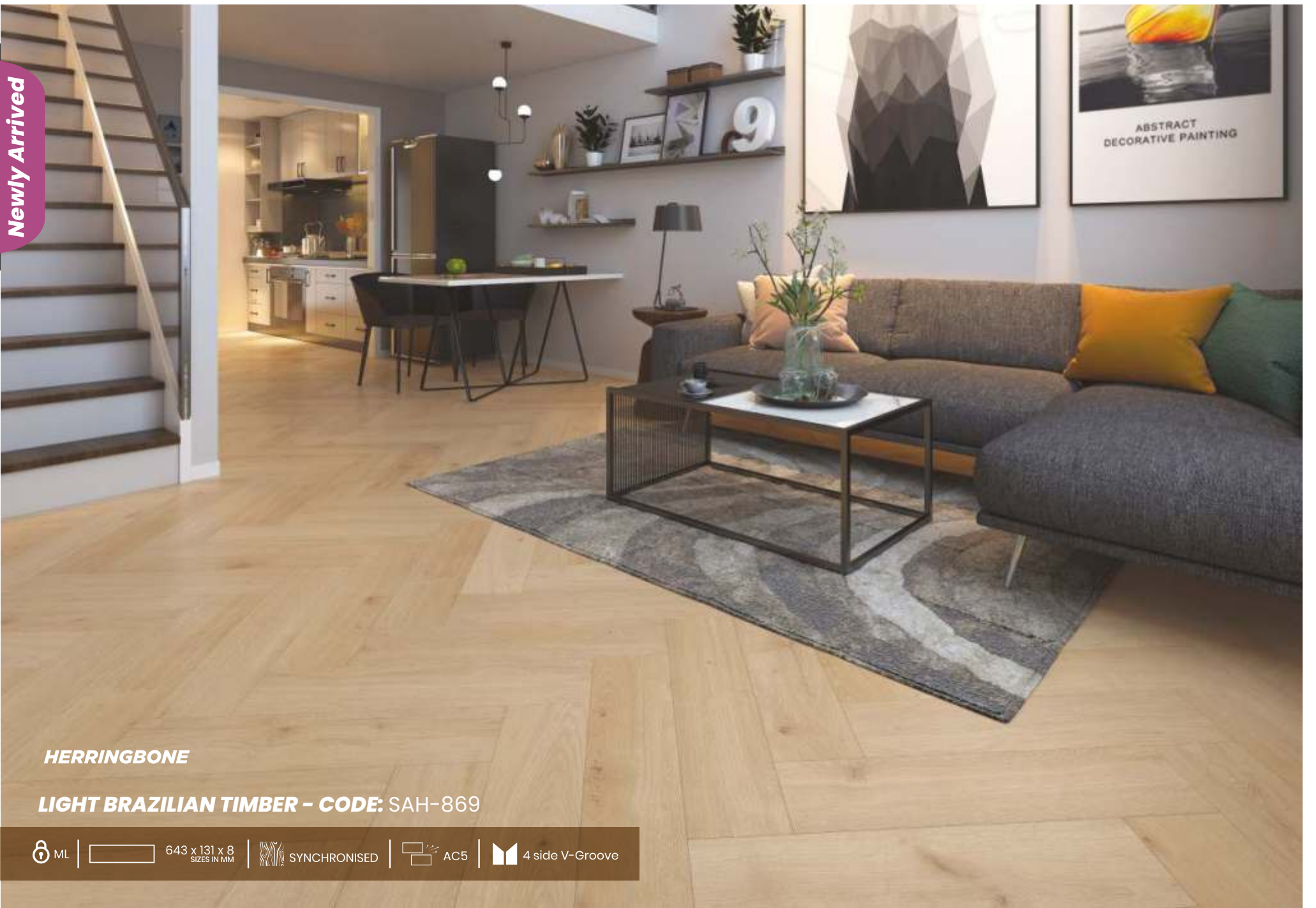


HERRINGBONE

MORROCCAN OAK - CODE: SAH-868

ML | 643 x 131 x 8 SIZES IN MM | SYNCHRONISED | AC5 | 4 side V-Groove

Newly Arrived



HERRINGBONE

LIGHT BRAZILIAN TIMBER - CODE: SAH-869

ML | 643 x 131 x 8 SIZES IN MM | SYNCHRONISED | AC5 | 4 side V-Groove



HERRINGBONE

PRESTIGE OAK - CODE: SH 857

665 x 133 x 8 SIZES IN MM | SYNCHRONISED | AC4

NEW




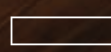



BORNEO TEAK - CODE: 807

ML | 1286 x 194 x 8 SIZES IN MM | STANDARD | AC4 | No V-Groove

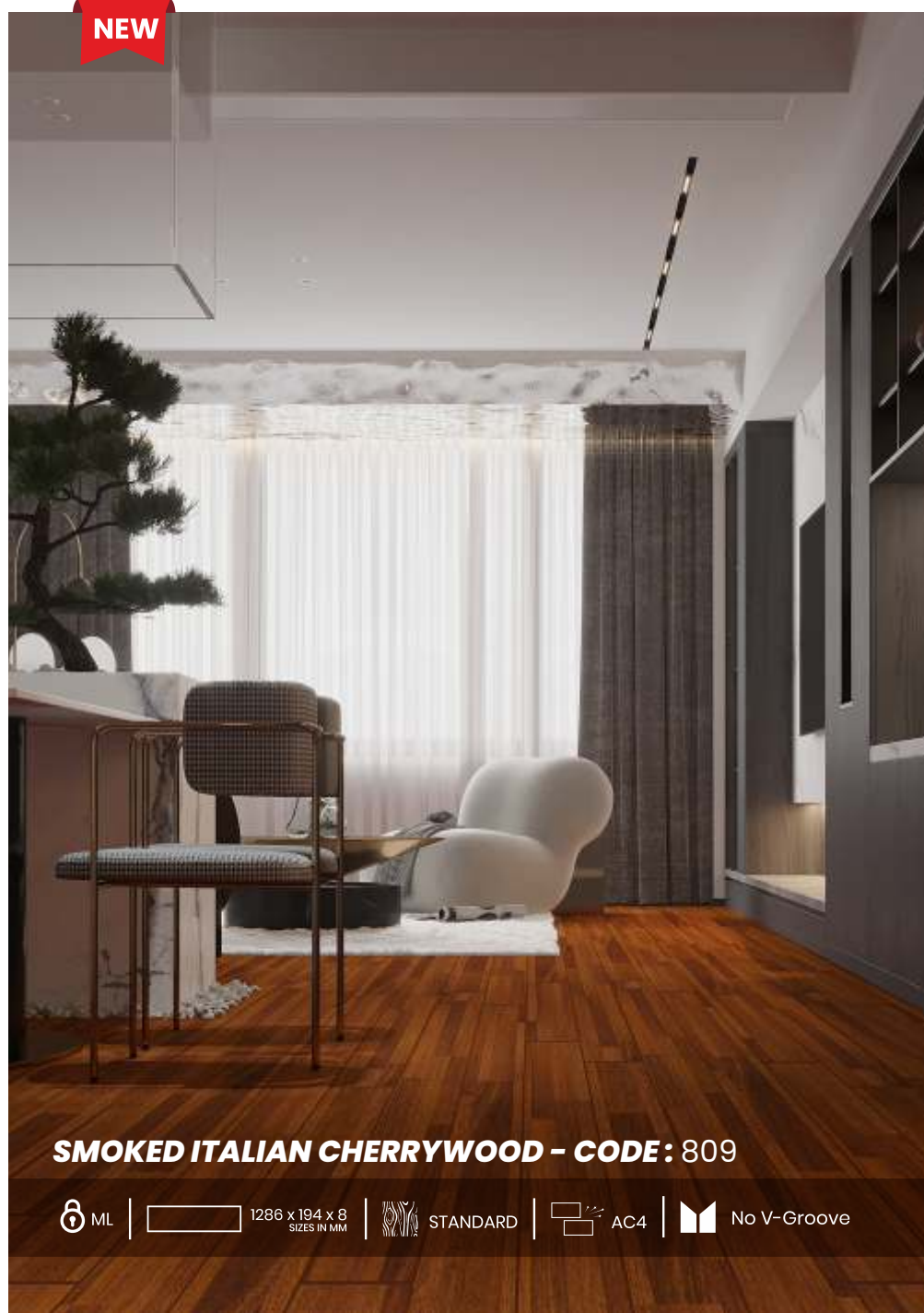
NEW



AFRICAN WALNUT - CODE: 808

 ML |
  1286 x 194 x 8
SIZES IN MM |
  STANDARD |
  AC4 |
  No V-Groove

NEW




SMOKED ITALIAN CHERRYWOOD - CODE: 809

 ML |
  1286 x 194 x 8
SIZES IN MM |
  STANDARD |
  AC4 |
  No V-Groove

NEW




AGED WOOD - CODE: 864

 ML |
  1285 x 192 x 8
SIZES IN MM |
  STANDARD |
  AC4 |
  4 side V-Groove

NEW



ENGLISH WALNUT - CODE: 865

 ML |
  1210 x 192 x 8
SIZES IN MM |
  STANDARD |
  AC4 |
  4 side V-Groove

NEW



HONEY OAK - CODE: 866

ML | 1210 x 192 x 8 SIZES IN MM | STANDARD | AC4 | 4 side V-Groove

NEW



TIAGA WALNUT - CODE: 806

ML | 1286 x 194 x 8 SIZES IN MM | STANDARD | AC4 | No V-Groove

NEW



LIGHT PARISIAN TIMBER - CODE: 858

ML | 1286 x 194 x 8 SIZES IN MM | STANDARD | AC4 | 4 side V-Groove

NEW



RUSTIC ARCTIC PINE - CODE: 859

ML | 1286 x 194 x 8 SIZES IN MM | STANDARD | AC4 | 4 side V-Groove

NEW



PASADENA OAK - CODE: 860

ML | 1286 x 160 x 8 SIZES IN MM | STANDARD | AC4 | 4 side V-Groove

NEW



SIDENY BLACK TEAK - CODE: SAL 861

ML | 1285 x 192 x 8 SIZES IN MM | SYNCHRONISED | AC5 | 4 side V-Groove



TRENDING

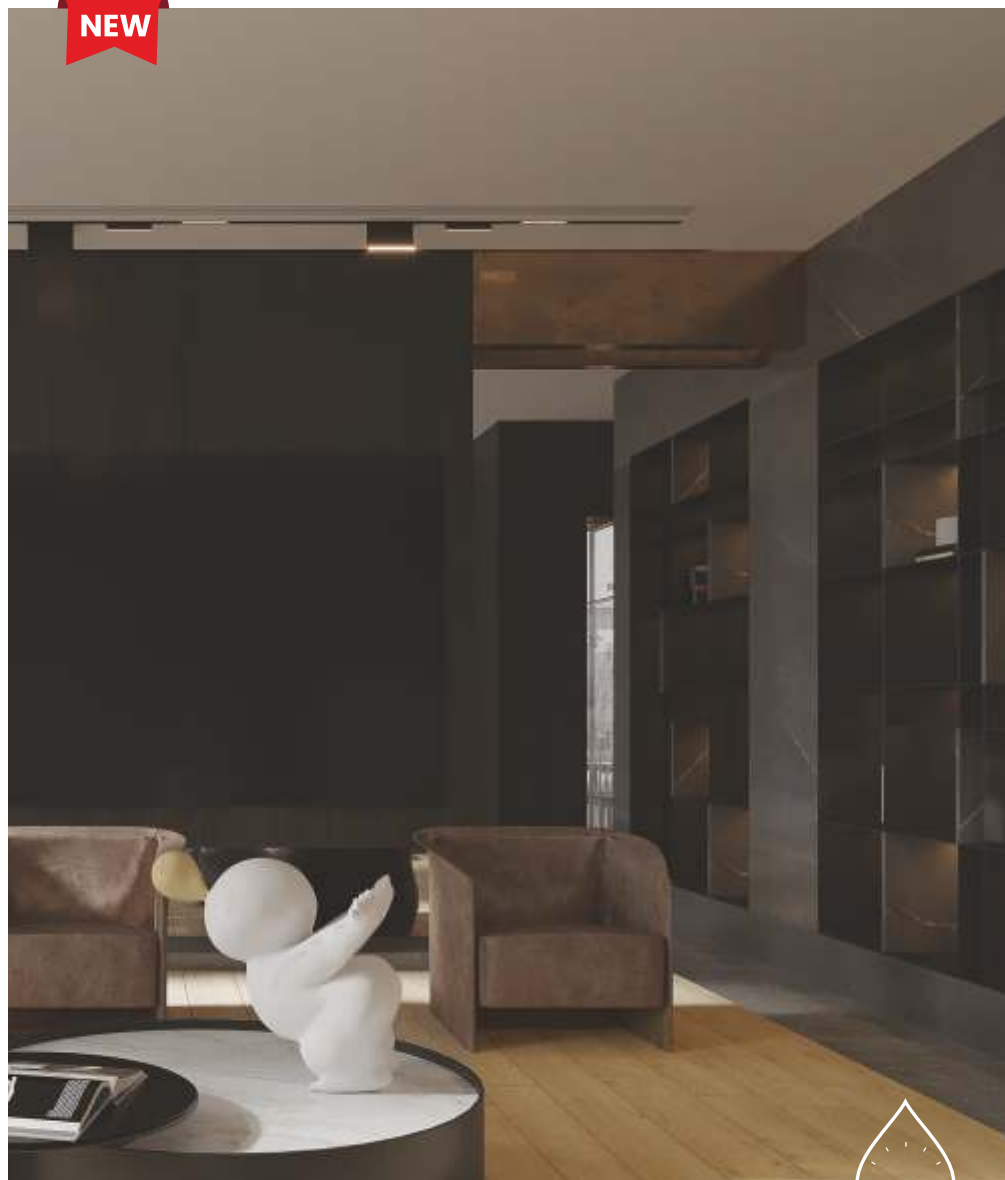


AFRICAN LUGA TEK - CODE: SAL 862

ML | 1285 x 192 x 8 SIZES IN MM | SYNCHRONISED | AC5 | 4 side V-Groove



NEW



VENETIAN MOCHA - CODE: SAL 863

ML | 1285 x 192 x 8 SIZES IN MM | SYNCHRONISED | AC5 | 4 side V-Groove





RIDGED BRAZILIAN OAK - CODE: 802

BEST SELLER

ML | 1286 x 194 x 8 SIZES IN MM | STANDARD | AC4 | No V-Groove



DARK JAPANESE SEN - CODE: 804

BEST SELLER

ML | 1286 x 194 x 8 SIZES IN MM | STANDARD | AC4 | No V-Groove



DARWIN BLACK - CODE: 805

BEST SELLER

ML | 1286 x 194 x 8 SIZES IN MM | STANDARD | AC4 | No V-Groove



TRENDING

AFRICAN PADAUK - CODE: SA-839

ML | 1285 x 192 x 8 SIZES IN MM | SYNCHRONISED | AC5 | 4 side V-Groove

TRENDING



MOUNTAIN HEMLOCK - CODE: S-841 A

ML | 1285 x 158 x 8 SIZES IN MM | SYNCHRONISED | AC4 | 4 side V-Groove



MONUMENT OAK - CODE: 831

ML | 1286 x 194 x 8 SIZES IN MM | STANDARD | AC4 | 4 side V-Groove



BENNET OAK - CODE: 832 A

BEST SELLER

ML | 1286 x 194 x 8 SIZES IN MM | STANDARD | AC4 | 4 side V-Groove



ANTIC OAK BRAUN - CODE: 833

BEST SELLER

ML | 1286 x 194 x 8 SIZES IN MM | STANDARD | AC4 | 4 side V-Groove

TRENDING



TAIGA BLACK - CODE: S-837

ML | 1286 x 160 x 8 SIZES IN MM | SYNCHRONISED | AC4 | 4 side V-Groove



SMOKED KNOTTY PINE - CODE: L 846

ML | 1285 x 192 x 8 SIZES IN MM | STANDARD | AC4 | 4 side V-Groove



EXOTIC BEACHWOOD - CODE: L 847

ML | 1285 x 192 x 8 SIZES IN MM | STANDARD | AC4 | 4 side V-Groove



SMOKED MANOR WOOD - CODE: S-1203

ML | 1286 x 194 x 12 SIZES IN MM | SYNCHRONISED | AC4 | 4 side V-Groove



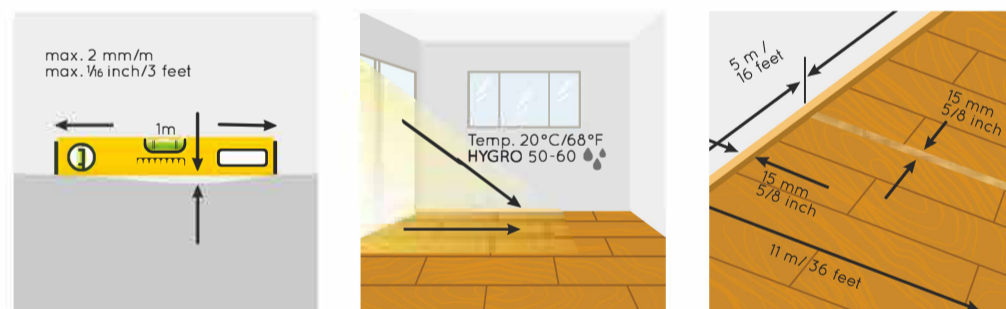
TECHNICAL PARAMETERS

Characteristics	Test Method	Requirements
General Requirements		
Squareness	EN 13329	≤ 0.20 mm
Straightness	EN 13329	≤ 0.30 mm
Flatness of the elements	EN 13329	Width: concave ≤ 0.15% convex ≤ 0.20 % Length: concave ≤ 0.50 % convex ≤ 1.00 %
Openings	EN 13329	∅ ≤ 0.15 mm / max. ≤ 0.20 mm
Height difference	EN 13329	≤ 0.10 mm / max. ≤ 0.15 mm
Residual indentation	EN ISO 24343-1	≤ 0.05 mm
Light fastness	EN 20105-A02	grey scale level ≥ 4

Essential Characteristics		
Reaction to fire*	EN ISO 11925-2 EN ISO 9239-1	Cfl - S1
Slip resistance*	EN 13893	DS
Formaldehyde*	EN 717-1	E1

Characteristics	Test Method	Requirements
Classification Requirements		
Castor chair resistance	EN 425	no damage with type W after 25000 cycles
Locking strength	ISO 24334	F10.2 ≤ 1.0 kN/m Fs0.2 ≤ 2.0 kN/m
Movement of a furniture leg	EN 424	no damage with type 0
Resistance to staining	EN 438	5 (group 1 and 2), 4 (group 3)
Surface soundness	EN 311	≥ 1.25 N/mm ²
Wear resistance (AC4)	EN13329	IP ≥ 4000 cycles
Wear resistance (AC5)	EN13329	IP ≥ 6000 cycles
Impact resistance (AC4)	EN13329	small-diameter ball ≥ 12N, large-diameter ball ≥ 750 mm
Impact resistance (AC5)	EN13329	small-diameter ball ≥ 15N, large-diameter ball ≥ 1000 mm
Thickness swelling (AC4)	EN13329	≥ 18%
Thickness swelling (AC5)	EN13329	≥ 15%

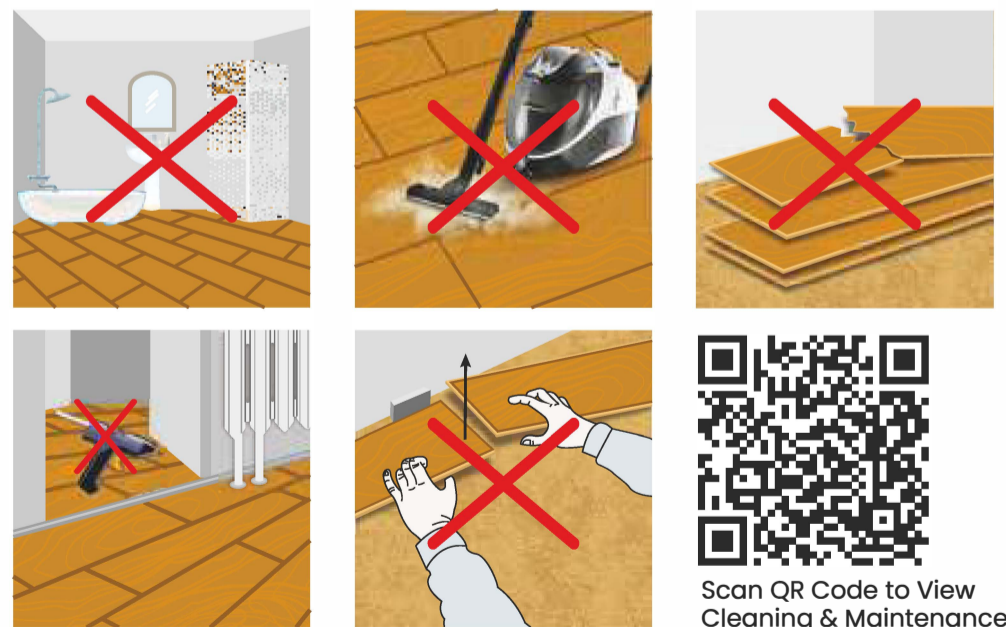
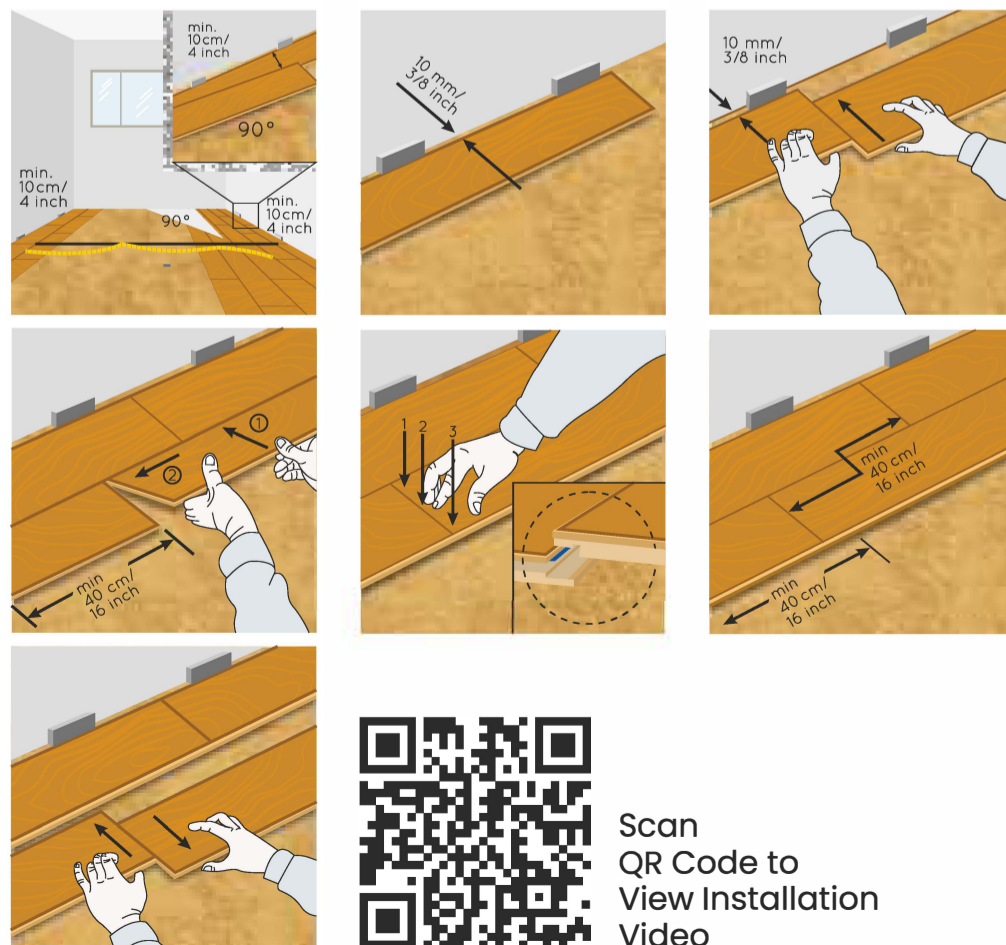
PRE-INSTALLATION PREPARATION



CLEANING & MAINTENANCE



INSTALLATION



Scan QR Code to View
Cleaning & Maintenance
Guide



Scan
QR Code to
View Installation
Video

www.royaletouche.com/woodenfloors
Mobile: +91 93 13 807 316
Toll Free : 1800 104 4357